



CARE



The relationship between architecture and housing needs requires designers and manufacturers to take into consideration the accessibility requirement of buildings. Eclisse proposes specific solutions to offer anyone a functional and architectural environment without barriers.

## INDEX

---

ECLISSE EWOLUTO®	4
ECLISSE HOIST	8
ECLISSE TWICE	12
ECLISSE E-MOTION	14

# ECLISSE EWOLUTO®

EWOLUTO® sliding pocket door is the system that allows hanging furniture, hangers and shelves directly on the wall where it is placed.

The special structure transforms the counterframe into a real wall that can bear exceptional weights, eliminating what is considered as a limit of a sliding pocket door system.

EWOLUTO® does not obstruct the moving spaces and does not interfere with the passage of a wheelchair, which can move freely without any obstacles.

It is also indicated for fixing safety bath handlebar.



SINGLE DOOR  
MODEL



DOUBLE DOOR  
MODEL



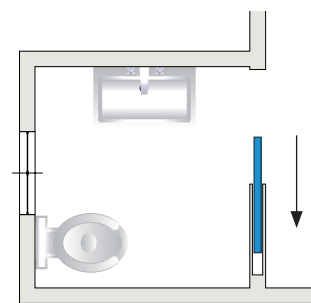




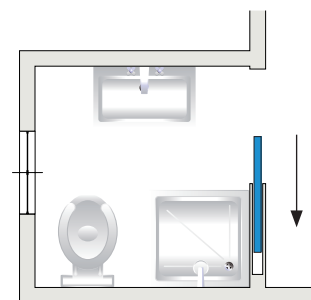
## A WALL FOR ALL INTENTS AND PURPOSES

Thanks to an innovative design, ECLISSE Ewoluto® pocket door allows to use the walls that support the counterframe, in order to carry weights, even of considerable capacity, in complete safety.

For this reason it is also suitable for environments where there is a need to install devices for the disabled directly on the wall of the counterframe, as in the case of bath handlebar in the shower box.



CLASSIC POCKET DOOR SOLUTION



POCKET DOOR WITH ECLISSE EWOLUTO®



## PLUS

In collaboration with the CSI institute in Italy, ECLISSE has conducted a number of voluntary tests to determine the precise load capacity of the vertical surfaces of the EWOLUTO® system.

The capacity alters depending on the anchorage points, the type of plugs used and the distance between the wall surface and the extremity of the mounted furniture, and can vary between 30 and 360 kg. Specifically, the maximum capacity of a handle fixed with a chemical plug (4 anchorage points) is 100 kg at 600 mm from the wall.

## MODELS

Single or double pocket doors

Passage size:

SINGLE DOOR  
W from 600 to 1200 mm  
H from 2000 to 2400 mm

Passage size:

DOUBLE DOOR  
W from 600+600 to 1200+1200 mm  
H from 2000 to 2400 mm

## ACCESSORIES

ECLISSE BIAS®  
ECLISSE BIAS® DS  
Rallenty Soft  
Double-door synchronisation  
Motorisation  
Anti-warp profile  
ECLISSE Push&Pull C



# ECLISSE HOIST

A comprehensive design for everyone. Multiple needs and only one answer: accessibility, especially for people with reduced mobility.

HOIST is a variation of the standard Single model designed to be installed in conjunction with the different hoists and lifting devices operating on motorised tracks, used to transport and assist people with disabilities.







## TECHNOLOGY AT THE SERVICE OF DISABILITY

ECLISSE HOIST represents a solution that eliminates architectural barriers so any interior space can benefit from the advantages of a sliding pocket door system. The structure has been adapted so that the top horizontal bar does not interfere with the passage of the hoist track and allows to close the door.

ECLISSE HOIST model can be made starting with a minimum passage width of 900 mm (considering that the door panel protrudes by 100 mm to allow the installation of the push handle, the net passage width is 800 mm).

Door panel maximum weight is 60 kg.  
Solutions designed for each project.



The structure has been adapted so that the top horizontal bar does not interfere with the passage of the hoist track and allows to close the door.



Sliding doors offer the following technical details: more space and greater manoeuvrability.

Of course you get more usable space and no intrusion into corridors, but if you are a wheelchair user or have difficulties with manoeuvrability it is clearly much, much easier to pass through a sliding pocket door.

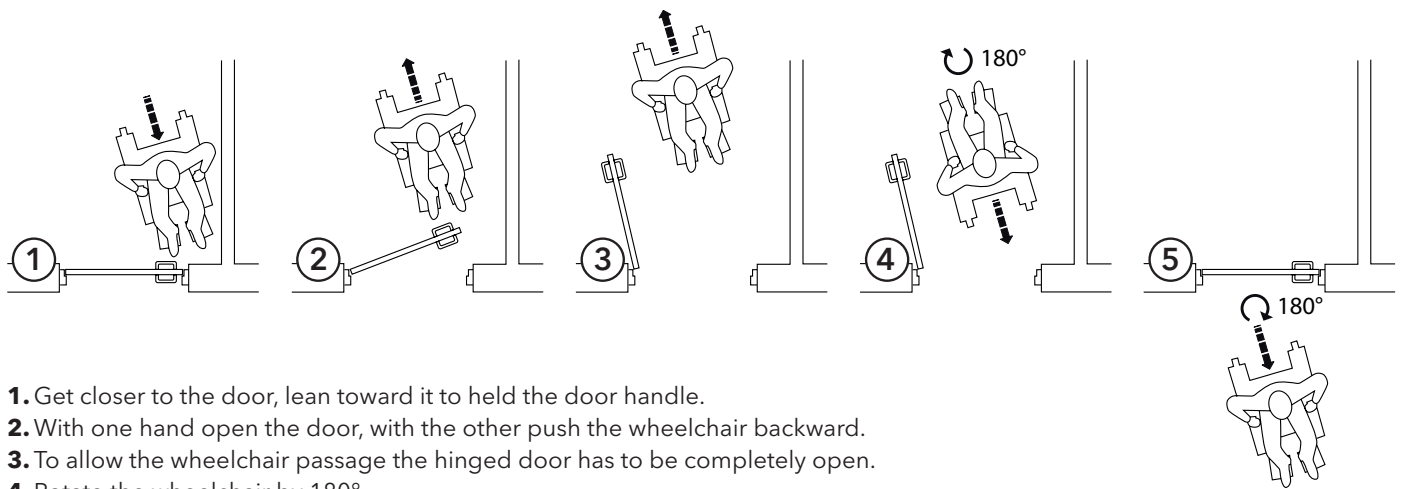
The awkward backward and forward motion needed when using a hinged door is completely eliminated.

This is also the case for anyone using walking aids or indeed blind or visually impaired people, as the danger of the leading edge is removed.

---

### HINGED DOOR

---

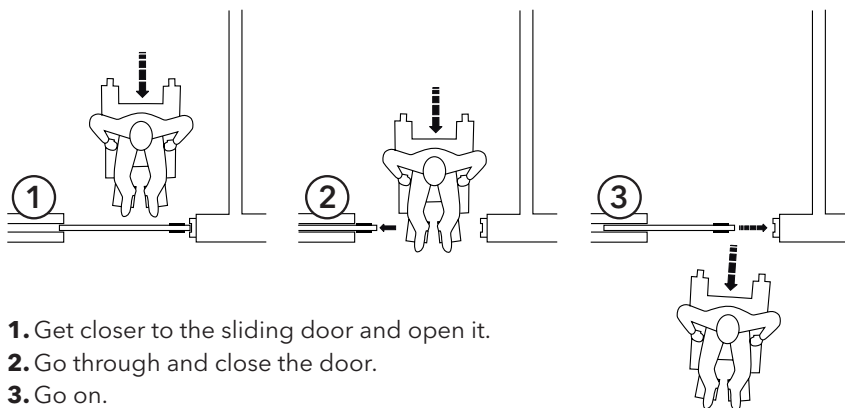


1. Get closer to the door, lean toward it to held the door handle.
2. With one hand open the door, with the other push the wheelchair backward.
3. To allow the wheelchair passage the hinged door has to be completely open.
4. Rotate the wheelchair by 180°.
5. Go backward through the door thrusting with a hand, with other held the handle to close the door.  
Rotate by 180°.
6. Go on.

---

### SLIDING DOOR

---



1. Get closer to the sliding door and open it.
2. Go through and close the door.
3. Go on.



## **ECLISSE TWICE**

ECLISSE TWICE allows you to transform a sliding pocket door into a large hinged opening, simply by pulling a lever. A solution that makes it possible to temporarily double the passage size, especially in hospitals or industrial premises, to facilitate the passage of beds or equipment.



ECLISSE TWICE is made up of one anodized aluminium structure and two wooden lateral panels. The profile is available in aluminium finish or painted in RAL colours. The panels are made of eco-friendly chipboard primer-coated white melamine ready to be painted. For cleaning and maintenance, take off the side panels by simply removing the screw located under the pin handle.

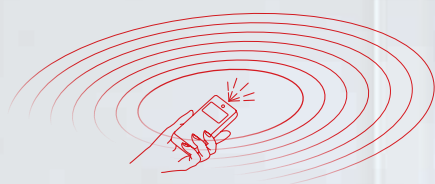


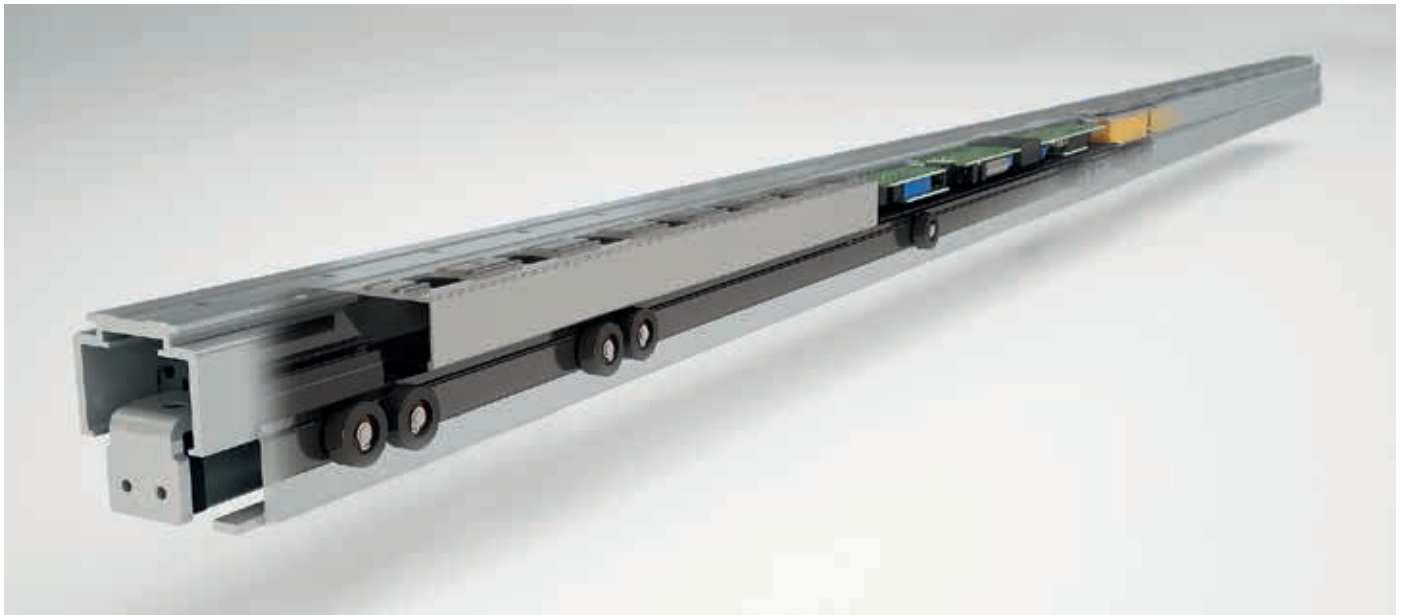


# ECLISSE E-MOTION

E-Motion is the new linear motor for Eclisse sliding pocket door systems that allows the automatic opening and closing of the door, thanks to the magnetic technology applied.

The motor is already assembled with power supply and push button and ready to be installed.





### PLUG&PLAY

Just connect the motor to the power supply (AC 230V) and push the button.

### SELF SETTING

The innovative electronic control system installed inside the track starts a self-setting process which senses passage size, weight and friction of the door.

### ADJUSTABLE

The qualified installer can modify the door opening speed, the opening time and the sensitivity to obstacles.

## STANDARD FUNCTIONS

- **Push&Go:** through a light manual impulse on the door handle, the system starts an opening cycle automatically.
- **Automatic:** the door opens by means of an impulse from radar, switch or remote control.
- Once opened, the door closes automatically.
- **Open:** selecting this mode, the door remains open. This function allows the manual opening of the door as well.
- **Manual:** in case of power failure, E-Motion works in manual mode. The absence of mechanical elements guarantees, however, a slight and silent movement.
- E-Motion fits with **UNICO, LUCE single, UNILATERAL, EWOLUTO®**.
- Passage sizes in mm: L 700 ÷ 1300 x H 1000 ÷ 2600.
- Max door weight 80 kg.
- Starting from finished wall thickness 100 mm.
- **Optional fittings:** Remote control, Radar, Electromechanical block with remote control.

© 2020 ECLISSE, all rights reserved. The use, filing and total or partial reproduction, using any mechanical or electronic means, of texts, drawings and pictures contained in this publication is strictly prohibited, unless specifically approved in writing by ECLISSE.

All pictures and drawings are for illustrative purposes only. ECLISSE s.r.l. reserves the right to make changes in order to improve the product specifications without notice. We may change the content of this catalogue, so if you have any queries related to the products you can contact our call center. ECLISSE refuses any responsibility for misprints, clerical errors or for any other reason.



Via Giovanni Pascoli, 7 - 31053 Pieve di Soligo TV - Italy - T. +39 0438 985749  
international.sales@eclisse.it - www.eclisseworld.com