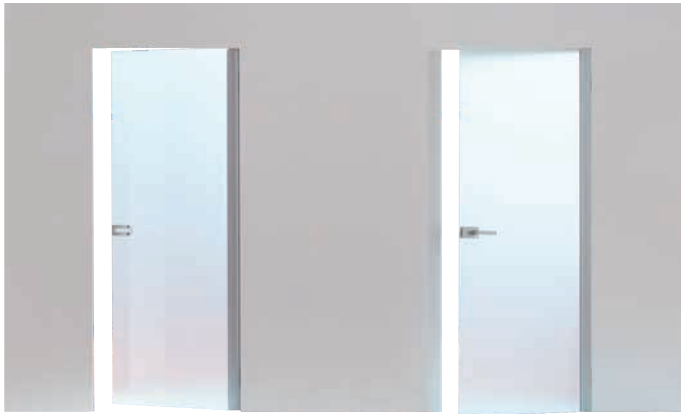


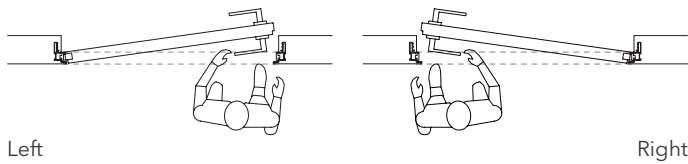
ECLISSE SYNTESIS® BATTENTE GLASS

TECHNICAL DETAILS

OPENINGS



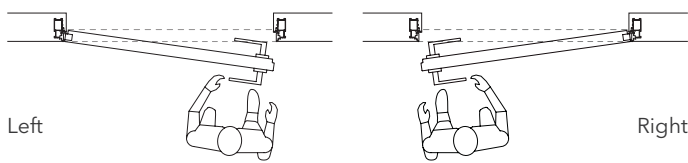
PUSH DOOR



Left

Right

PULL DOOR

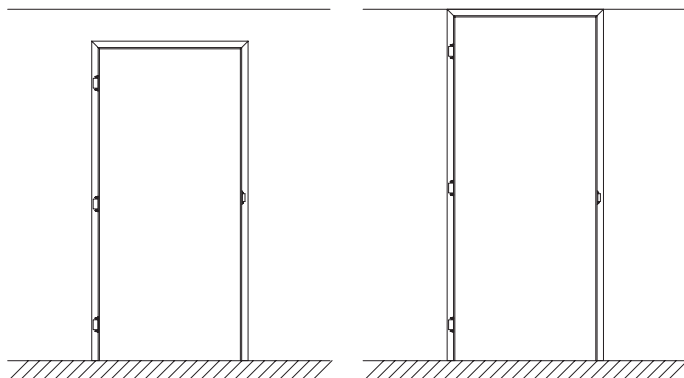


Left

Right

VERSIONS

ECLISSE SYNTESIS® BATTENTE GLASS is only available with header.



With header

With header
flush to ceiling



SUPPLY METHODS



FRAME ONLY



DOOR KIT

Includes hardware, gaskets, lock and anodized aluminium vertical profile (handle not included).

ECLISSE SYNTESIS® BATTENTE GLASS

TECHNICAL DETAILS



1

The 8 mm tempered glass door is supported by a vertical anodized aluminium profile, while the hinges, completely hidden, ensure good stability and load capacity even for big doors.
For the list of compatible handles, see the HANDLES section.

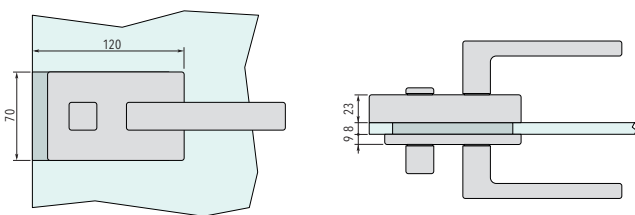
PUSH DOOR



Details of the anodized aluminium vertical profile with closed and open door.

2

LOCK DIMENSIONS



Dimensions are given in mm.

PULL DOOR



Details of the anodized aluminium vertical profile with closed and open door.

ECLISSE SYNTESIS® BATTENTE GLASS

APPLICATIONS

Dimensions are given in mm

The frame fits both stud and solid wall.

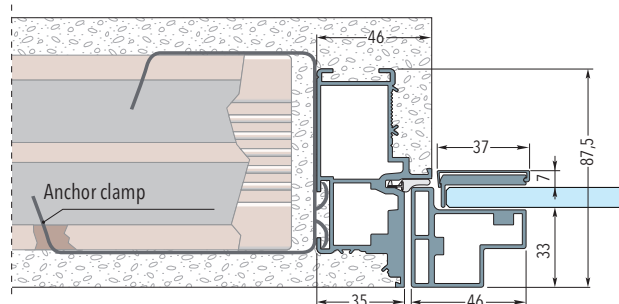
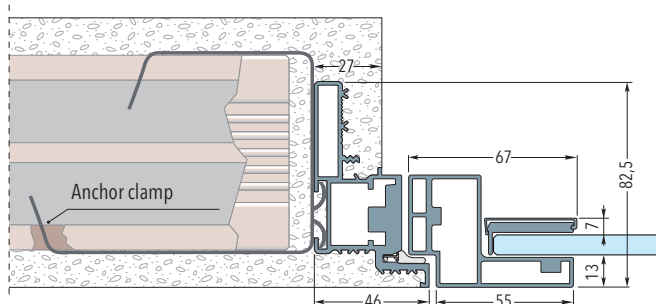
For solid wall 6 clamps are cemented in the special spaces created in the wall.

For stud wall the frame is fixed with screws to the wood or metal structure through the existing holes.

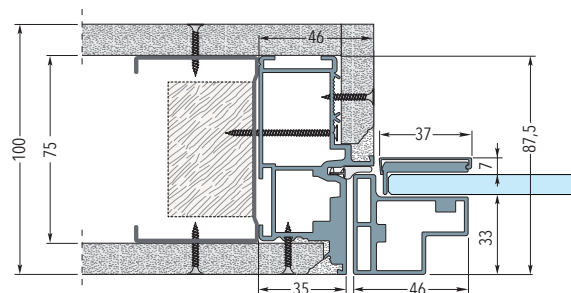
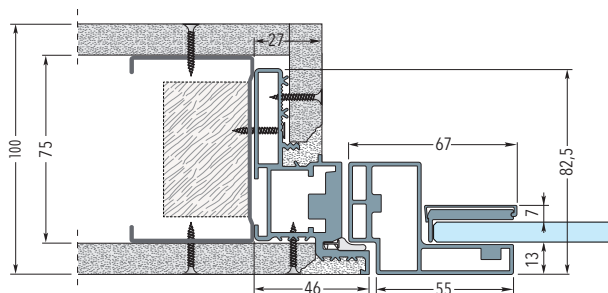
PUSH DOOR

PULL DOOR

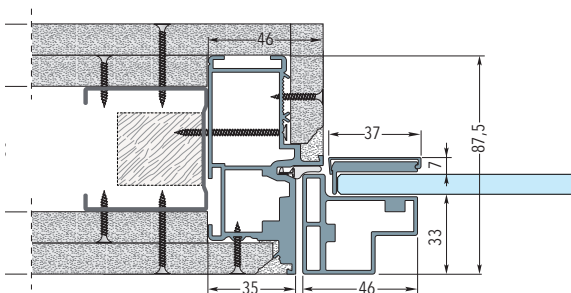
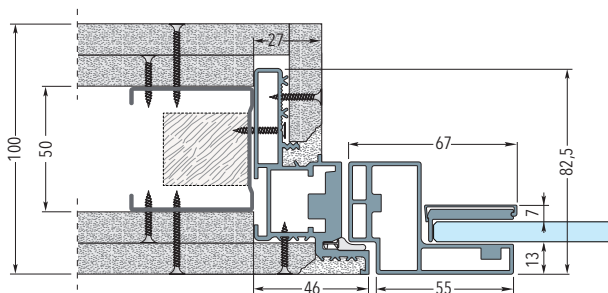
Frame on solid wall



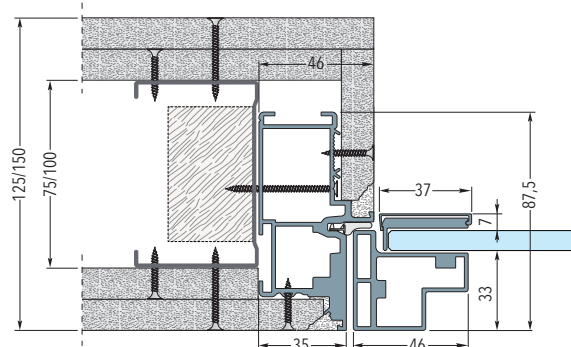
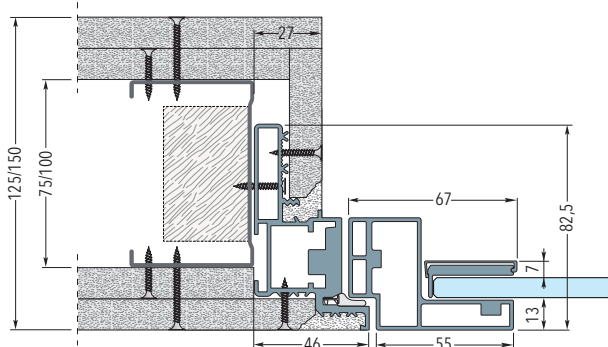
Frame on stud wall with one plasterboard layer - Finished wall thickness 100 mm



Frame on stud wall with two plasterboard layers - Finished wall thickness 100 mm



Frame on stud wall with two plasterboard layers - Finished wall thickness 125/150 mm



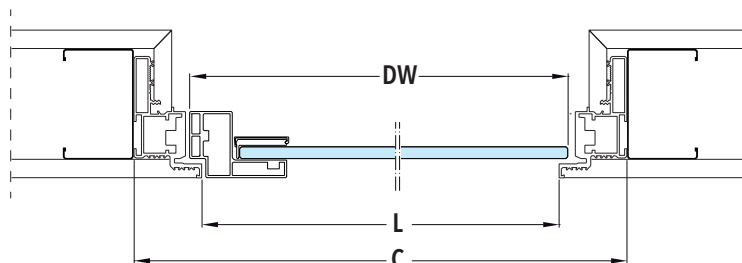
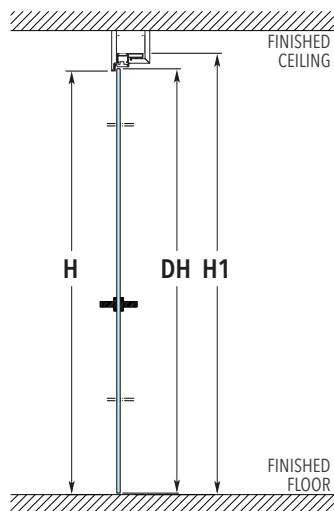
ECLISSE SYNTESIS® BATTENTE GLASS

SIZES - FRAME WITH HEADER



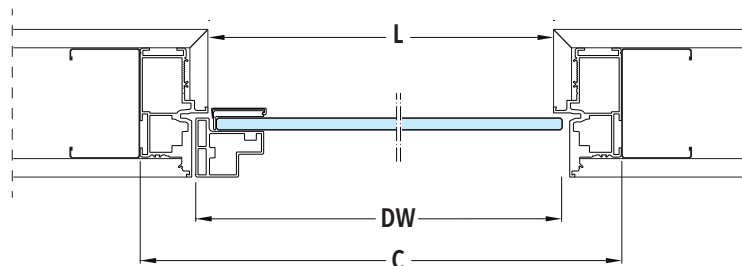
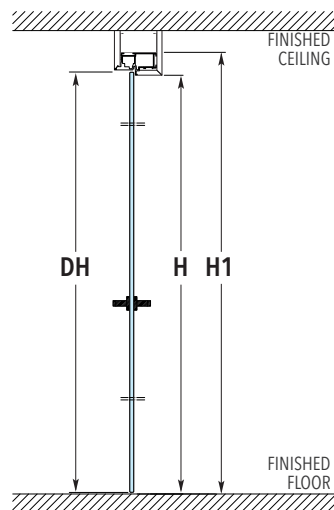
PUSH DOOR

FRAME WITH HEADER



PULL DOOR

FRAME WITH HEADER



SIZES - FRAME WITH HEADER

PASSAGE SIZE L x H	OVERALL DIMENSIONS C x H1	GLASS DOOR PANEL - Thk. 8 mm	
		DW	DH
600 x 2100/2400	692 x 2146/2446	616	2098/2398
650 x 2100/2400	742 x 2146/2446	666	2098/2398
700 x 2100/2400	792 x 2146/2446	716	2098/2398
750 x 2100/2400	842 x 2146/2446	766	2098/2398
800 x 2100/2400	892 x 2146/2446	816	2098/2398
850 x 2100/2400	942 x 2146/2446	866	2098/2398
900 x 2100/2400	992 x 2146/2446	916	2098/2398
950 x 2100/2400	1042 x 2146/2446	966	2098/2398
1000 x 2100/2400	1092 x 2146/2446	1016	2098/2398

Dimensions are given in mm

NOTES

- ▶ Height intervals every 50 mm, from 1650 mm to 2700 mm.
- ▶ If H > 2200 mm the door frame is fitted for 4 hinges.
- ▶ Install at finished floor level.